

Map of Darfur showing the location of the map sheet in Sudan. The map is part of a series of maps covering the entire Sudan. The map is based on the 1:250,000 scale topographic map of Sudan. The map is part of the 1:250,000 scale topographic map of Sudan. The map is part of the 1:250,000 scale topographic map of Sudan.

Map of Darfur showing the location of the map sheet in Sudan. The map is part of a series of maps covering the entire Sudan. The map is based on the 1:250,000 scale topographic map of Sudan. The map is part of the 1:250,000 scale topographic map of Sudan. The map is part of the 1:250,000 scale topographic map of Sudan.

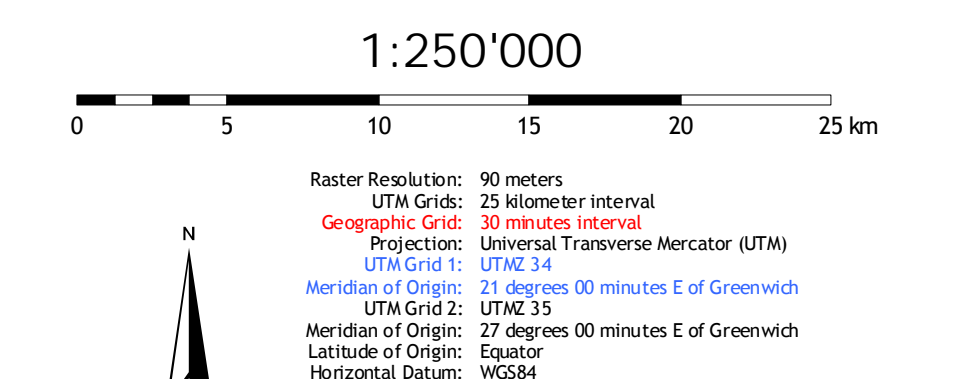
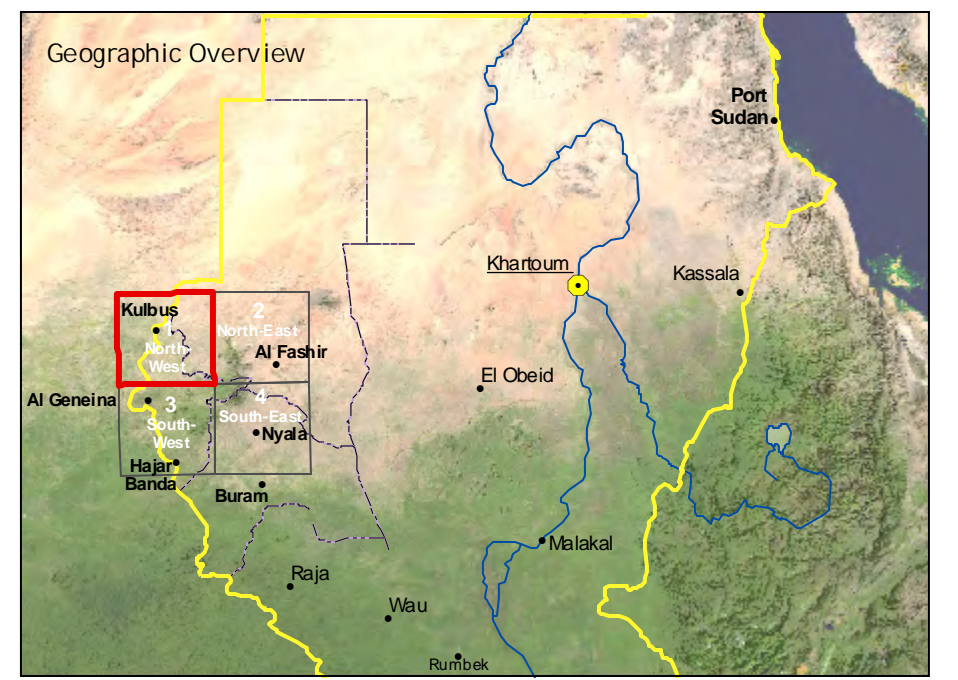
### Topographic Map Series

# DARFUR

## Western Sudan

Map Sheet: North-West

### Topographic Base Map for Humanitarian Relief Operations



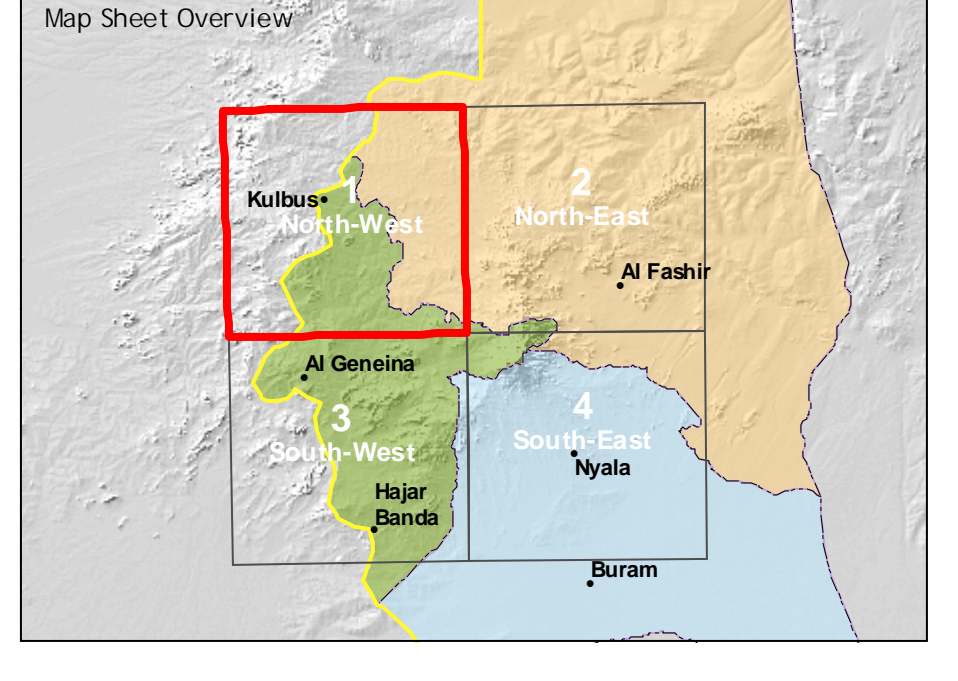
Scale: 1:250,000

North Arrow

Copyright © University of Bern  
 Centre for Development and Environment  
 CH-3012 Bern, Switzerland  
 Internet: www.cde.unibe.ch

- |  |   |
|--|---|
| <ul style="list-style-type: none"> <li>Settlements</li> <li>State capital</li> <li>Principal town</li> <li>Secondary town</li> <li>Administrative town</li> <li>Settlement (not verified)</li> <li>Settlement (not verified)</li> <li>Built-up area</li> <li>Vulnerable area (camp, IDP, ...)</li> </ul> | <ul style="list-style-type: none"> <li>Political boundaries (not authoritative)</li> <li>National boundary</li> <li>State boundary (UNH)</li> <li>State boundary (tentative)</li> <li>Tribal area</li> <li>Nomadic or tribal area</li> <li>Infrastructure features</li> <li>Airport (CDE)</li> <li>Main road (CDE)</li> <li>Gravel road (CDE)</li> <li>Track (CDE)</li> <li>Street (CDE)</li> <li>Railway (CDE) (non-operational)</li> <li>Main road (ES)</li> <li>Gravel road (ES)</li> <li>Street (ES)</li> <li>Street (ES)</li> <li>Intermediate contour (50 m interval)</li> <li>Intermediate contour (50 m interval)</li> <li>Infrastructure point features</li> <li>Bridge</li> <li>Ford</li> </ul> |
| <ul style="list-style-type: none"> <li>Geographical features</li> <li>Hills and mountains</li> <li>Dune</li> </ul>   | <ul style="list-style-type: none"> <li>Hydrological features</li> <li>Seasonal river</li> <li>Quasi-permanent river</li> <li>Episodic river</li> <li>Dry river</li> <li>Canal</li> <li>Canal (unintended)</li> <li>Lake or riverbed</li> <li>Pond / Pool</li> <li>Spring</li> <li>Waterhole</li> <li>Wadi</li> <li>Well</li> </ul>  |
| <ul style="list-style-type: none"> <li>Topography</li> <li>Spot height</li> <li>Main contour (100 m interval)</li> <li>Intermediate contour (50 m interval)</li> </ul>   | <ul style="list-style-type: none"> <li>Land cover classes</li> <li>Forest</li> <li>Bushland</li> <li>Sparse vegetation</li> <li>Arable land</li> <li>Surface water</li> </ul>   |

- Wetlands
- Freshwater marshes and floodplains
- Paludic and saline wetland
- Intermittent wetland and lake



Map reference: Please refer to the information used in other mapping products, the source of the map must be credited as the CDE, University of Bern, Centre for Development and Environment, Institute of Geography, University of Bern. The CDE, University of Bern, Centre for Development and Environment, Institute of Geography, University of Bern.