

These data were derived from the Digital Elevation Model (DEM) of the region, which was generated by the Swiss Federal Institute of Technology (ETH Zurich) and the University of Bern. The DEM is based on satellite data and provides a detailed representation of the terrain. The map is a topographic map and shows the relief of the region. The map is a topographic map and shows the relief of the region. The map is a topographic map and shows the relief of the region.

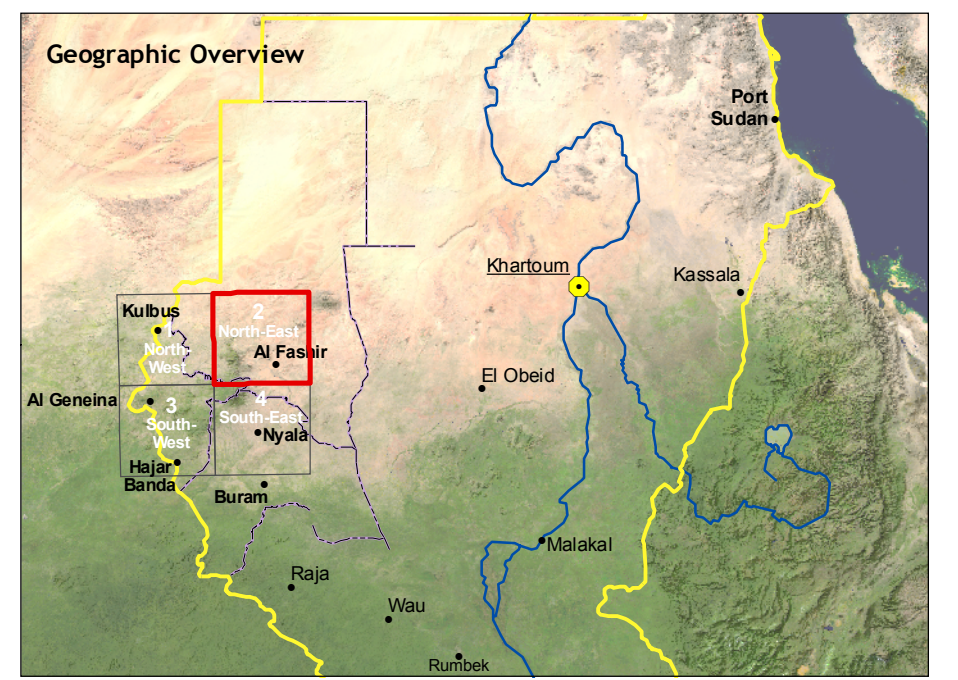
# Topographic Map Series

## DARFUR

### Western Sudan

Map Sheet: North-East

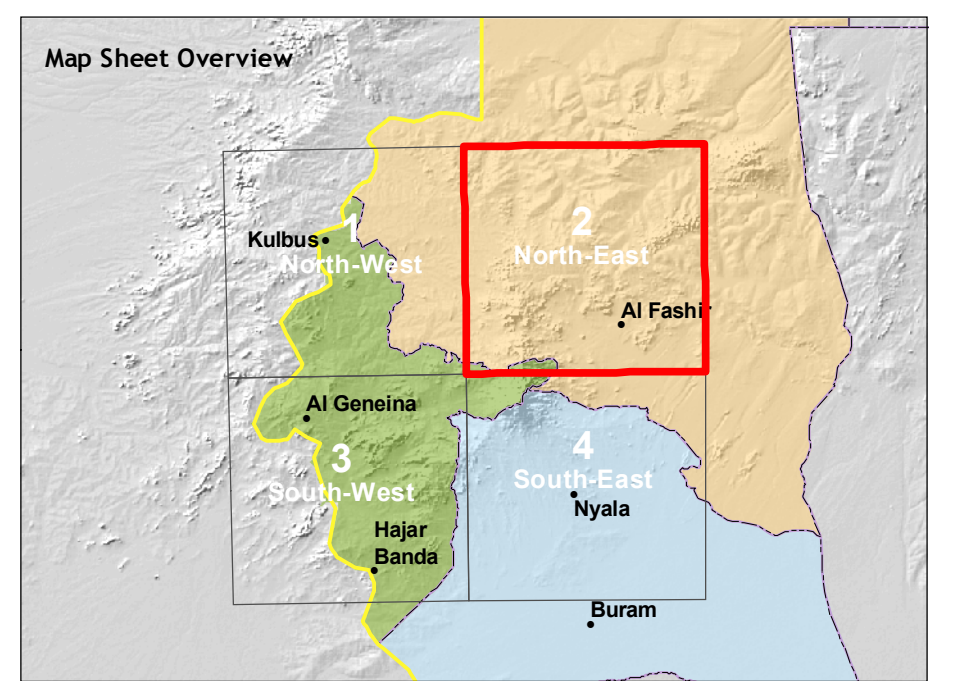
#### Topographic Base Map for Humanitarian Relief Operations



Scale: 1:250,000  
Scale bar: 0 to 25 km  
North arrow  
Projection: UTM Zone 33N  
Datum: WGS 84  
Elevation: Mean sea level  
Vertical datum: Mean sea level  
Horizontal datum: WGS 84  
Map scale: 1:250,000  
Scale: 1:250,000  
Scale bar: 0 to 25 km  
North arrow  
Projection: UTM Zone 33N  
Datum: WGS 84  
Elevation: Mean sea level  
Vertical datum: Mean sea level  
Horizontal datum: WGS 84  
Map scale: 1:250,000

Copyright © Cde centre for development and environment, University of Bern, Switzerland

- Settlements**
  - State capital
  - Principal town
  - Secondary town
  - Administrative town
  - Settlement (not verified)
  - Settlement (verified)
  - Built-up area
  - Vulnerable area (camp, IDP, ...)
- Political boundaries (not authoritative)**
  - National boundary
  - State boundary
  - State boundary (tentative)
- Tribal area**
  - AT/BG Nomadic or tribal area
- Infrastructure features**
  - Airstrip (CDE)
  - Main road (CDE)
  - Gravel road (CDE)
  - Track (CDE)
  - Street (CDE)
  - Railway (CDE) (non-operational)
  - Main road (ES)
  - Gravel road (ES)
  - Street (ES)
  - Dirt road or track (ES)
- Geographical features**
  - Hills and mountains
  - Dune
- Topography**
  - Spot height
  - Main contour (100 m interval)
  - Intermediate contour (50 m interval)
- Elevation classes**
  - < 600
  - 601 - 800
  - 801 - 1,000
  - 1,001 - 1,200
  - 1,201 - 1,400
  - 1,401 - 1,600
  - 1,601 - 1,800
  - 1,801 - 2,000
  - 2,001 - 2,400
  - > 2,400
- Land cover classes**
  - Forest
  - Bushland
  - Sparse vegetation
  - Arable land
  - Surface water
- Hydrological features**
  - Seasonal river
  - Occasional river
  - Episodic river
  - Dry river
  - Canal
  - Canal (unfinished)
  - Lake or riverbed
  - Pond / Pool
  - Waterhole
  - Wadi
  - Well
- Wetlands**
  - Freshwater marshes and floodplains
  - Pan trackline and saline wetland
  - Intermittent wetland and lake
- Infrastructure point features**
  - Bridge
  - Ford



Map reference:  
These data were derived from the Digital Elevation Model (DEM) of the region, which was generated by the Swiss Federal Institute of Technology (ETH Zurich) and the University of Bern. The DEM is based on satellite data and provides a detailed representation of the terrain. The map is a topographic map and shows the relief of the region. The map is a topographic map and shows the relief of the region.