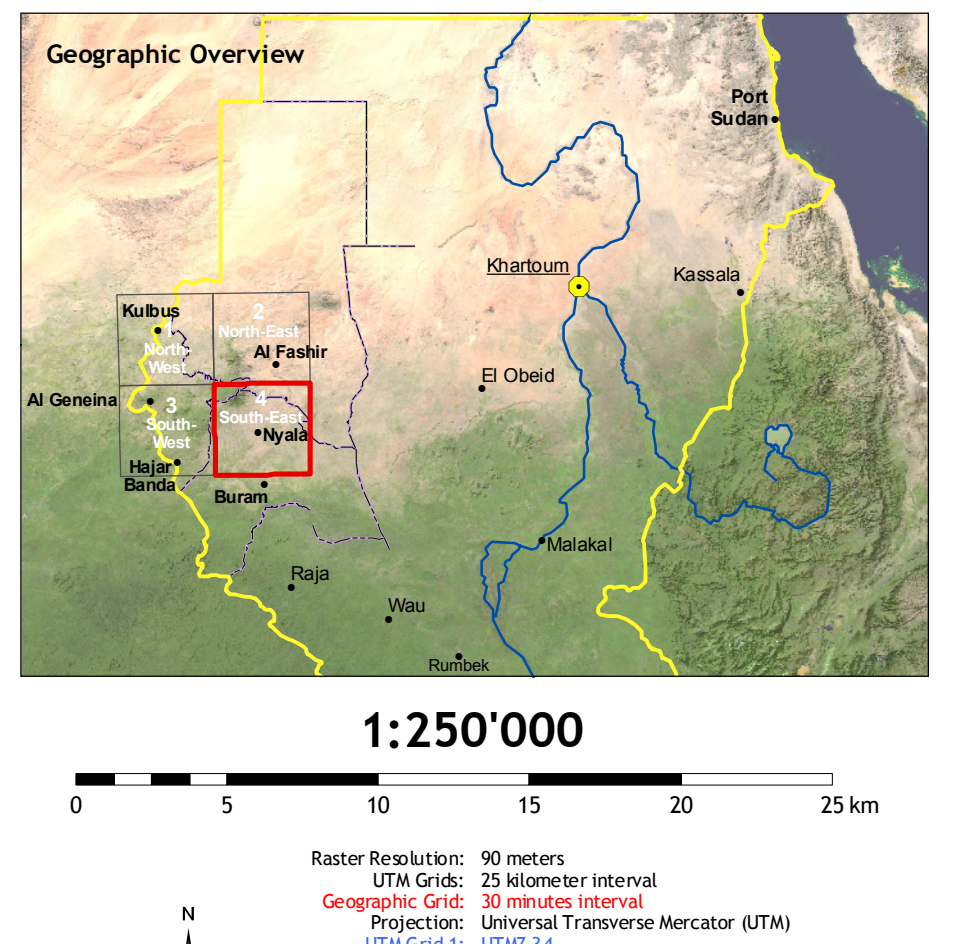
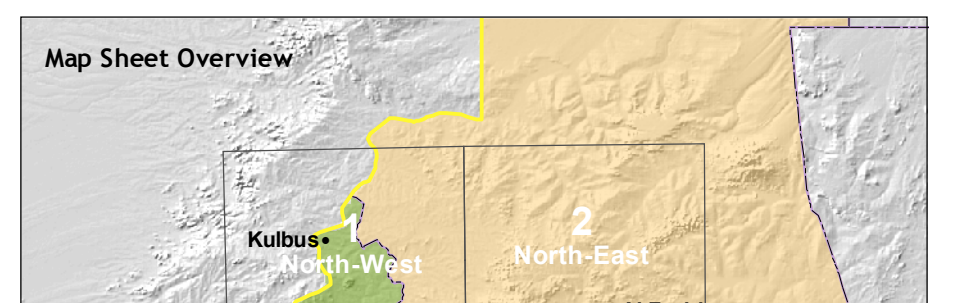
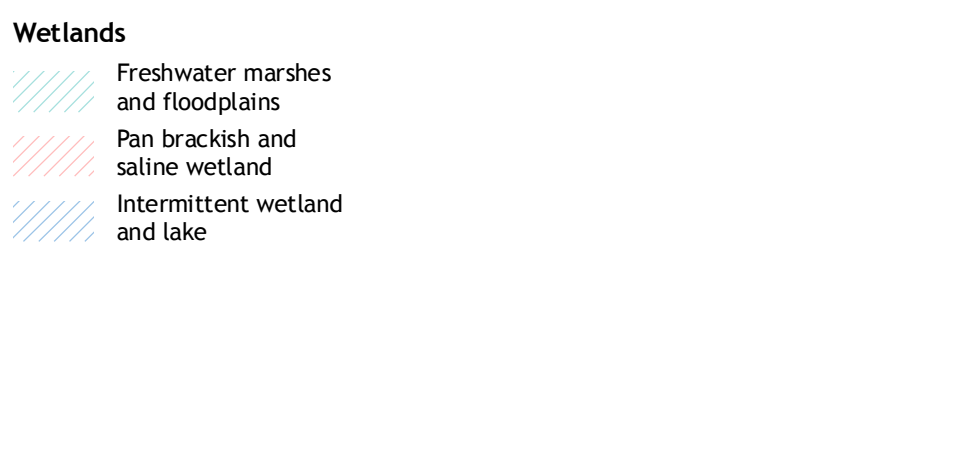


Topographic Map Series
DARFUR
Western Sudan
Map Sheet: South-East
Topographic Base Map for Humanitarian Relief Operations



University of Bern
Centre for Development and Environment
Cooperating Institute
CH-3012 Bern, Switzerland
Internet: www.cde.unibe.ch

- Copyright © CDE centre for development and environment
- | | |
|---|---|
| <ul style="list-style-type: none"> ● State capital ● Principal town ● Secondary town ● Administrative town ● Settlement (not verified) ● Settlement (verified) ● Built-up area ● Vulnerable area (camp, IDP, ...) | <ul style="list-style-type: none"> — National boundary — State boundary (tentative) — Tribal area — Nomadic or tribal area — Infrastructure features — Airstrip (CDE) — Main road (CDE) — Gravel road (CDE) — Track (CDE) — Street (CDE) — Railway (CDE) (non-operational) — Main road (ES) — Street (ES) — Dirt road or track (ES) |
| <ul style="list-style-type: none"> ▲ Hills and mountains ▲ Dune | <ul style="list-style-type: none"> — Infrastructure point features — Bridge — Ford — Hydrological features — Seasonal river — Occasional river — Episodic river — Dry river — Canal — Canal (unfinished) — Lake or riverbed — Pond / Pool — Spring — Waterhole — Well — Well |
| <ul style="list-style-type: none"> — Spot height — Main contour (100 m interval) — Intermediate contour (50 m interval) | <ul style="list-style-type: none"> — Wetlands — Freshwater marshes and floodplains — Pan, brackish and saline wetland — Intermittent wetland and lake |



Map reference:
This map is a derivative of the map series 'Topographic Base Map for Humanitarian Relief Operations' (CDE, University of Bern, Switzerland) and is based on the map series 'Topographic Base Map for Humanitarian Relief Operations' (CDE, University of Bern, Switzerland).
The CDE, University of Bern, would not be liable for any information that is not correct, complete, or up-to-date. For comments and suggestions, please contact the CDE at: info@cde.unibe.ch, Tel: +41 78 310 1000, Fax: +41 78 310 1001, and further project information are available on the CDE's Web Page: www.cde.unibe.ch