

# Central Equatoria State - Sudan



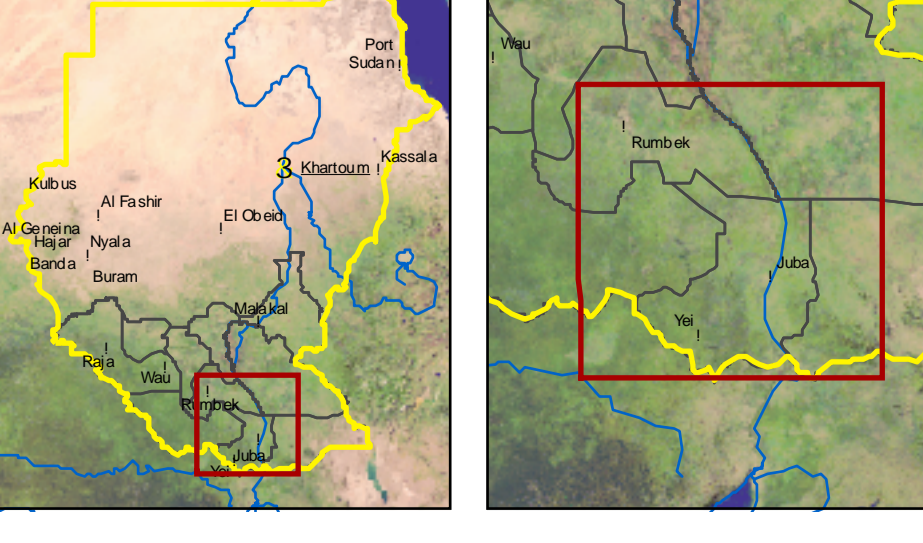
Southern Sudan State Map Series

Central Equatoria State

Sudan  
1 : 500'000

Copyright ©  
Federal Department  
of Foreign Affairs  
3003 Berne, Switzerland

Geographic Overview



Political boundaries

- State boundary (tentative)
- National boundary
- North-South demarcation line 1956 (tentative)

Settlements

- State capital
- Principal town
- Secondary town
- Administrative town
- Settlement (verified)
- Settlement (not verified)
- Built-up area

Infrastructure features

- Asiatic (CEE)
- Main road (CDE)
- Gravel road (CDE)
- Dirt road (CDE)
- Street (CDE)
- Railway (CDE) (non-operational)
- Bridge (EIS)
- Main road (ES)
- Gravel road (ES)
- Street (ES)
- Dirt road and track (ES)

Hydrological features

- Canal (griffithised)
- Pipeline
- Main river
- Seasonal river
- Occasional river
- Episodic river
- Dry river
- Canal
- Lake and riverbed

Elevation classes

- below 400m
- 401 - 450m
- 451 - 500m
- 501 - 550m
- 551 - 700m
- 701 - 900m
- 901 - 1300m
- 1301 - 1800m
- 1801 - 2500m
- above 2500m

Land cover classes

- Forest
- Bushland
- Sparsely vegetated
- Arable land
- Surface water

Wetlands

- Freshwater marshes and floodplains
- Peat bogs and saline wetland

Projection information

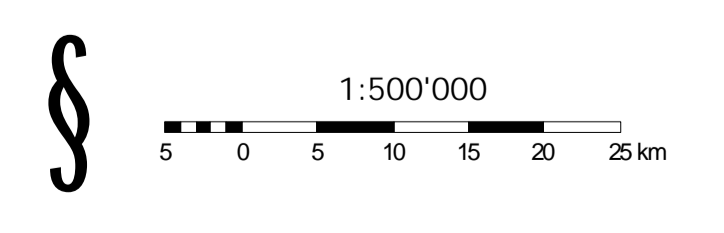
- The present map sheet is composed of field maps (1:250,000) and a series of state maps of the Southern Sudan State Map Series (1:500,000). The maps and the geodatabase were prepared by the Centre for Development and Environment (CDE) of the University of Berne, Switzerland, with funding from the Swiss Federal Department of Foreign Affairs. The map is being released as a technical contribution to support the humanitarian peace-keeping and reconstruction efforts in Southern Sudan. Boundaries, translations, settlement locations and the North-South demarcation line of 1956 shown on this map are not authoritative and should not be considered as such. The CDE (University of Berne) would welcome any information that could improve this map. For comments and suggestions, please contact the CDE at [info@cde.unibe.ch](mailto:info@cde.unibe.ch)

Data compilation

- Georeferencing of spatial data was obtained through vector-to-image rectification. Except for the non-shaded area, NASA's SRTM30+ data were used as a reference for topographic features and for the development of a digital terrain model (DTM). The DTM has a 90-meter resolution and shows contours. Artificial built-up areas and relief in flat areas of the DTM was calculated based on spot heights and contours from map sources. Ground truthing and control points were not applied. Average geometric distortion is estimated to be below 0.15%. Metadata, both in HTML and PDF format, were derived from the DTM. Terra MODIS (V2 and EV2) and FAO ALOS data (Landsat) information was classified and cross-validated. Verification on terrain was not applied. Raster mosaicking, georeferencing and digital cartography were done with ESRI ArcGIS 9.1 and LERC ESDR MAGNIE B.T.

Version: Draft release 1.6  
October 2005

University of Berne  
Centre for Development  
and Environment  
Geoprocessing Unit  
Steingrabenstrasse 3  
CH-3008 Berne, Switzerland  
Internet: [www.cde.unibe.ch](http://www.cde.unibe.ch)



Raster Resolution: 90 meters  
UTM Grid: 25 kilometer interval  
Geographic Grid: 500'000  
Projection: Universal Transverse Mercator (UTM)  
UTM Zone: UTM 34 Q (reprojected)  
Meridian of Origin: 23 degrees 00 minutes (central meridian)  
Latitude of Origin: Equator  
Horizontal Datum: WGS84  
Vertical Datum: Mean sea level  
Spheroid: WGS84