

Eastern Equatoria State - Sudan

Southern Sudan State Map Series

Map printed by CDE, University of Berne, Switzerland. All rights reserved. © 2005



Southern Sudan State Map Series

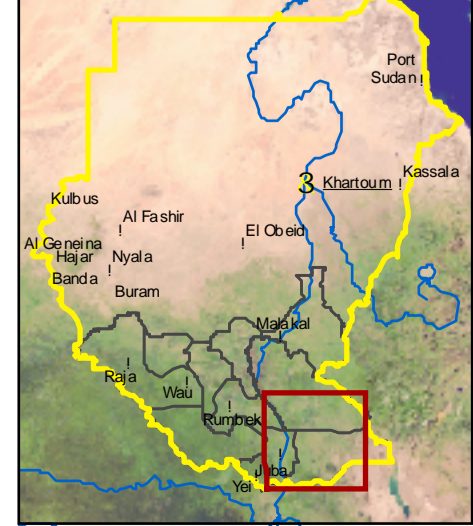
Eastern Equatoria State

Sudan

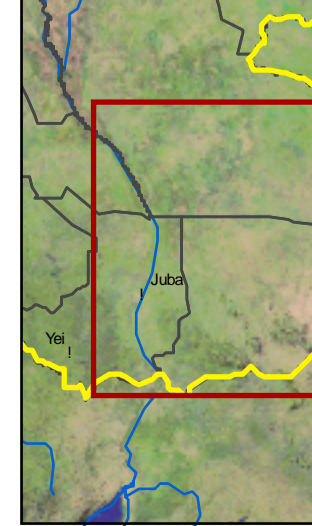
1 : 500'000

Copyright ©
Federal Department
of Foreign Affairs
3003 Berne, Switzerland

Geographic Overview



Location of Map Sheet



- Political boundaries**
- State boundary (tentative)
 - National boundary
 - North-South demarcation line 1956 (tentative)
- Topography**
- Spot height
 - Main contour (10m interval)
 - Intermediate contour (5m interval)
 - Supplementary contour

- Settlements**
- State capital
 - Principal town
 - Secondary town
 - Administrative town
 - Settlement (verified)
 - Settlement (not verified)
 - Built-up area
- Geographical features**
- Hills and mountains

- Infrastructural features**
- Airside (CDE)
 - Main road (CDE)
 - Gravel road (CDE)
 - Dirt road (CDE)
 - Street (CDE)
 - Railway (CDE) (non-operational)
 - Bridge (ES)
 - Main road (ES)
 - Gravel road (ES)
 - Street (ES)
 - Dirt road and track (ES)

- Hydrological features**
- Canal (griffished)
 - Pipeline
 - Main river
 - Seasonal river
 - Occasional river
 - Episodic river
 - Dry river
 - Canal
 - Lake and riverbed

- Elevation classes**
- below 400m
 - 401 - 450m
 - 451 - 500m
 - 501 - 550m
 - 551 - 700m
 - 701 - 900m
 - 901 - 1'300m
 - 1'301 - 1'800m
 - 1'801 - 2'500m
 - above 2'500m

- Land cover classes**
- Forest
 - Bushland
 - Sparsely vegetated
 - Arable land
 - Surface water
- Wetlands**
- Freshwater marshes and floodplains
 - Palustrine wetlands
 - Saline wetland

- Project Information**
- The present map sheet is composed of field maps (1:250,000) and a series of maps of the Southern Sudan State Map Series (1:500,000). The maps and the geodatabase were prepared by the Centre for Development and Environment (CDE) of the University of Berne, Switzerland, with funding from the Swiss Federal Department of Foreign Affairs. The map is hereby released as a technical contribution to support the humanitarian, peace-keeping and reconstruction efforts in Southern Sudan. Boundaries, settlements, locations and the North-South demarcation line of 1956 shown on this map are not authoritative and should not be considered as such. The CDE (University of Berne) would not come any information that could improve this map. For comments and suggestions, please contact the CDE at info@cde.unibe.ch
- Data sources**
- Most of the line and point features were provided by Earthwork Information Services, Minneapolis, USA (EIS) based on the Sudan National Topographic Map (1:250,000 and 1:500,000 series). Many maps were digitized from the Sudan National Topographic Map (1:250,000 and 1:500,000 series), as well as road maps, water surfaces and (incandescent) line sources. Contour lines were digitized from the Sudan National Topographic Map (1:250,000 and 1:500,000 series) and the Sudan National Topographic Map (1:250,000 and 1:500,000 series).
- Data compilation**
- Georeferencing of spatial data was obtained through vector-to-image rectification. Except for the non-sloping area, NASA's SRTM data were used as a reference for topographic features and for the development of a digital terrain model (DTM). The DTM has a 90-meter resolution and shows contours. All contour lines and shaded relief in flat areas the DTM was calculated based on spot heights and contours from map sources. Ground truthing and control points were not applied. Average geometric distortion is estimated to be below ± 15 m. Wetlands, both in the Sudan and in the Sudan, were derived from Landsat ETM+, Terra MODIS (VCF and EVI), and FAO AICover data (vegetation). Information was classified and cross-validated. Verification on terrain was not applied. Raster mosaicking, georeferencing and digital cartography were done with ESRI ArcGIS 9.1 and Leica ERDAS IMAGINE 8.7.

- Scale**
- 1:500'000
- 0 5 10 15 20 25km
- Projection**
- Universal Transverse Mercator (UTM)
- UTM Zone: 34 N (reprojected)
- Projection: Universal Transverse Mercator (UTM)
- Latitude of Origin: 0° (Equator)
- Meridian of Origin: 23 degrees 00 minutes (central meridian)
- Horizontal Datum: WGS84
- Vertical Datum: Mean sea level
- Spheroid: WGS84

- Version:** Draft release 1.6
October 2005
- University of Berne**
Centre for Development
and Environment
Geoprocessing Unit
Steingrabenstrasse 3
CH - 3006 Berne, Switzerland
Internet: www.cde.unibe.ch

- CDE** centre for
development
and environment