

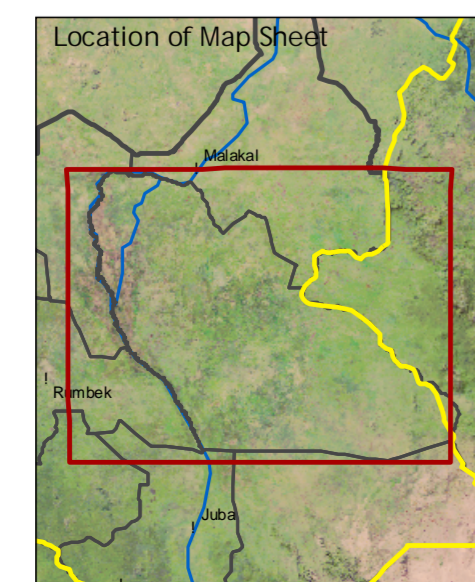
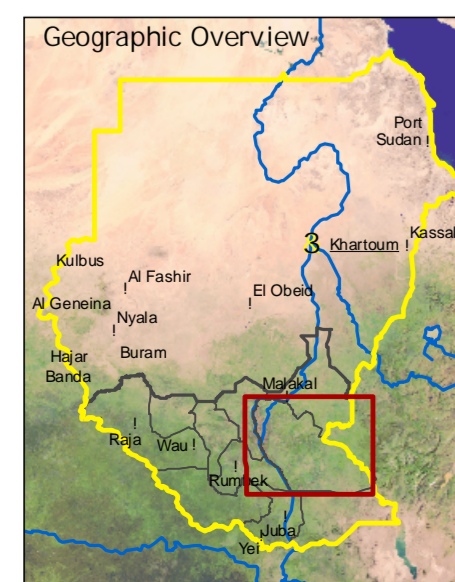


Southern Sudan State Map Series

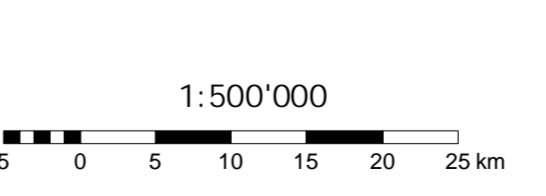
Jonglei State

Sudan

1 : 500'000



- Political boundaries**
 - State boundary (tentative)
 - Regional boundary
 - North-South demarcation line 1956 (tentative)
- Topography**
 - Spot height
 - Main contour (100m intervals)
 - Intermediate contour (50m intervals)
 - Supplementary contour
- Settlements**
 - State capital
 - Principal town
 - Secondary town
 - Administrative town
 - Settlement (not verified)
 - Built-up area
- Geographical features**
 - Hills and mountains
- Infrastructure Features**
 - Airstrip (CDE)
 - Main road (CDE)
 - Gravel road (CDE)
 - Dirt road (CDE)
 - Railway (CDE)
 - Railway (CDE) (non-operational)
 - Bridge (BS)
 - Main road (BS)
 - Street (BS)
 - Gravel road (BS)
 - Street (BS)
 - Street (BS)
 - Dirt road and track (BS)
- Hydrological features**
 - Canal (finished)
 - Pipeline
 - Main river
 - Seasonal river
 - Episodic river
 - Dry river
 - Canal
 - Lake and riverbed
- Elevation classes**
 - below 400 m
 - 401 - 450 m
 - 451 - 500 m
 - 501 - 550 m
 - 551 - 700 m
 - 701 - 900 m
 - 901 - 1100 m
 - 1101 - 1300 m
 - 1301 - 1500 m
 - 1501 - 2100 m
 - above 2100 m
- Land cover classes**
 - Forest
 - Bushland
 - Sparse vegetation
 - Arable land
 - Surface water
- Wetlands**
 - Freshwater marshes and floodplains
 - Peat bogs and saline wetland



Radar Resolution: 90 meters
 UTM Grid: 25 kilometer interval
 Projection: Universal Transverse Mercator (UTM)
 Meridian of Origin: 33 degrees 00 minutes (Central meridian)
 Equator: Equator
 Horizontal Datum: WGS84
 Vertical Datum: Mean sea level
 Spheroid: WGS84

Project information
 The present map sheet is composed of road maps (1:200,000) and a topographic map of the Southern Sudan State Map Series (1:500,000). The map was prepared as part of the project of the Centre for Geographical and Environmental Studies of the University of Berne, Switzerland, with funding from the Swiss Federal Department of Foreign Affairs. The map is being prepared as a technical contribution to support the work of the Sudanese authorities in the field of land use planning, infrastructure, transportation, settlement and land management.
 The CDE (University of Berne) would welcome any information that could improve this map. For comments and suggestions, please contact the CDE at info@cde.unibe.ch.
 The CDE (University of Berne) would welcome any information that could improve this map. For comments and suggestions, please contact the CDE at info@cde.unibe.ch.

Data sources
 Most of the line and point features were provided by Earthwatch Institute, Berne, Switzerland, 1998-2000. The map also includes data from the Sudanese National Survey, 1998-2000, and the Sudanese National Survey, 1998-2000. The map also includes data from the Sudanese National Survey, 1998-2000, and the Sudanese National Survey, 1998-2000.

Version: Draft release 1.6
 October 2005
University of Berne
 Centre for Development and Environment
 Geodesy/Geo-Information Unit
 CH-3008 Berne, Switzerland
 Internet: www.cde.unibe.ch