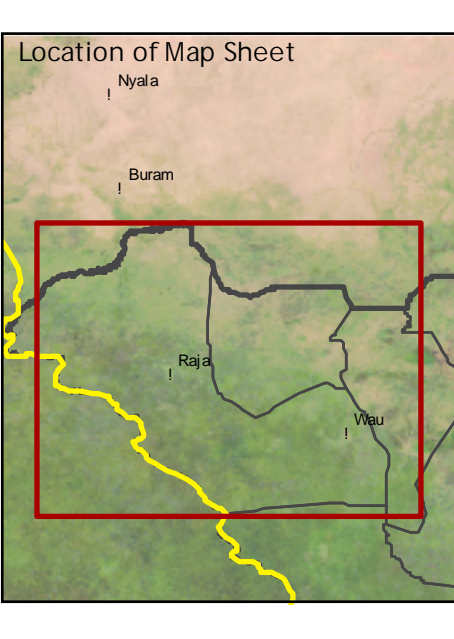


Southern Sudan State Map Series

Western and Northern Bahr el Ghazal States
Sudan
1 : 500'000



<p>Political boundaries</p> <ul style="list-style-type: none"> State boundary National boundary North-South demarcation (New 1996 tentative) <p>Topography</p> <ul style="list-style-type: none"> Spot height Main contour (10m interval) Intermediate contour (50m interval) Supplementary contour 	<p>Settlements</p> <ul style="list-style-type: none"> State capital Principal town Secondary town Administrative town Settlement (verified) Settlement (not verified) Built-up areas <p>Geographical features</p> <ul style="list-style-type: none"> Hills and mountains 	<p>Infrastructural Features</p> <ul style="list-style-type: none"> Air strip (CDE) Main road (CDE) Control road (CDE) Dirt road (CDE) Street (CDE) Railway (CDE) (non-operational) Bridge (E/S) Main road (E/S) Control road (E/S) Street (E/S) Dirt road and track (E/S) 	<p>Hydrological features</p> <ul style="list-style-type: none"> Canal (unfinished) Pipeline Main river Seasonal river Occasional river Episodic river Dry river Canal Lake and riverbed 	<p>Elevation classes</p> <ul style="list-style-type: none"> below 400 m 401 - 450 m 451 - 500 m 501 - 550 m 551 - 700 m 701 - 900 m 901 - 1200 m 1201 - 1800 m 1801 - 2500 m above 2500 m 	<p>Land cover classes</p> <ul style="list-style-type: none"> Forest Bushland Scrub vegetation Arable land Surface water <p>Wetlands</p> <ul style="list-style-type: none"> Freshwater marshes and floodplains Reed marsh and saline wetland 	<p>Scale</p> <p>1 : 500'000</p> <p>0 5 10 15 20 25 km</p> <p>Projection</p> <p>UTM Grid: 25 Kilometer Interval UTM Zone: 32N (for unprojected) Projection: Universal Transverse Mercator (UTM) Meridian of Origin: 27 degrees 00 minutes (central meridian) Horizontal Datum: WGS84 Vertical Datum: Mean sea level Spheroid: WGS84</p>	<p>Project Information</p> <p>The present map sheet is composed of field maps (1:250,000) and is one of nine maps of the Southern Sudan State Map Series (1:500,000). The map and the production were financed by the Swiss Federal Department of Foreign Affairs (EDA) and the Swiss Agency for Development and Cooperation (SDC). The map is being released as a technical contribution to support the Sudanese State Government and the international community.</p> <p>Data compilation</p> <p>Geographical information was obtained through vector-to-raster conversion. Except for the non-shading area, the SDC has been responsible for the production of the map and for the development of a digital terrain model (DTM). The DTM has been generated and stored in a digital format based on spot heights and contours from map sources. Ground truthing, control points and vector data were used to improve the accuracy of the DTM.</p> <p>Data sources</p> <p>Most of the line and point features were provided by the Sudanese State Government. The map is based on the Sudan Military Topographic Map, 1:250,000 and 1:500,000 scale. The map is based on the Sudan Military Topographic Map, 1:250,000 and 1:500,000 scale. The map is based on the Sudan Military Topographic Map, 1:250,000 and 1:500,000 scale. The map is based on the Sudan Military Topographic Map, 1:250,000 and 1:500,000 scale.</p>	<p>Version: Draft release 1.5 September 2005</p> <p>University of Berne Centre for Development and Environment Geoprocessing Unit St. Albansstrasse 11 CH - 3008 Berne, Switzerland Internet: www.cde.unibe.ch</p> <p>cde centre for development and environment</p>
--	--	---	---	--	--	--	--	---