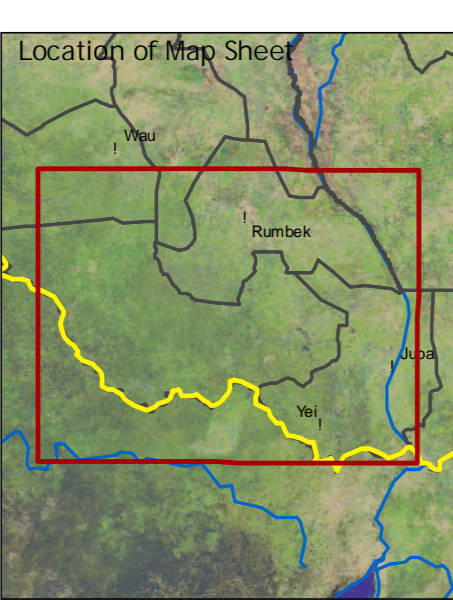
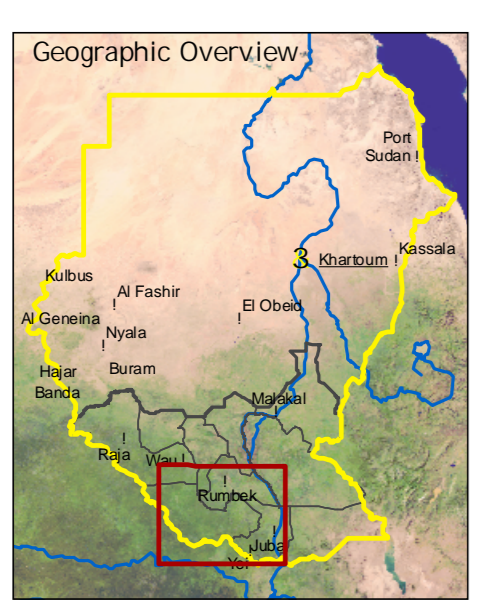


Southern Sudan State Map Series

Western Equatoria State
Sudan
1 : 500'000

Federal Department of Foreign Affairs
3003 Bern, Switzerland

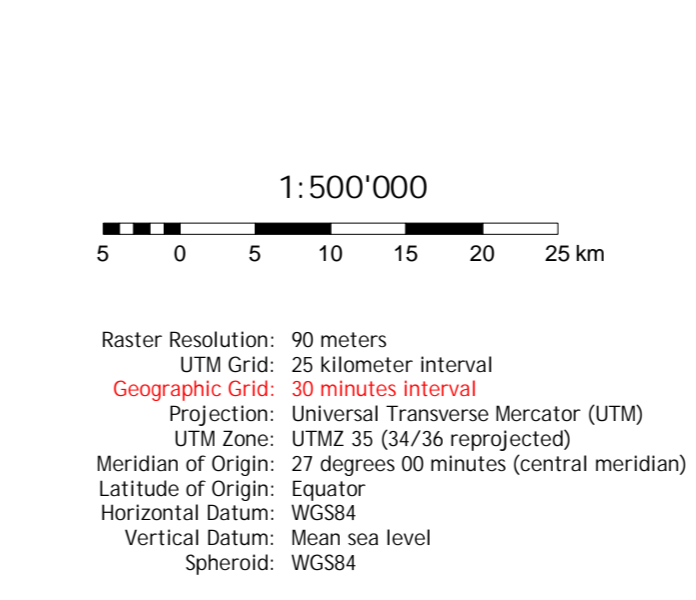


- Political boundaries**
- State boundary (tentative)
 - National boundary
 - North-South demarcation line 1956 (tentative)
- Topography**
- Spot height
 - Main contour (100m interval)
 - Intermediate contour (50m interval)
 - Supplementary contour
- Settlements**
- State capital
 - Principal town
 - Secondary town
 - Administrative town
 - Settlement (verified)
 - Settlement (not verified)
 - Built-up area
- Geographical features**
- Hills and mountains

- Infrastructure features**
- Airship (CDE)
 - Main road (CDE)
 - Gravel road (CDE)
 - Dirt road (CDE)
 - Street (CDE)
 - Railway (CDE) (non-operational)
 - Bridge (ES)
 - Main road (ES)
 - Gravel road (ES)
 - Street (ES)
 - Dirt road and track (ES)
- Hydrological features**
- Canal (unfinished)
 - Perennial main river
 - Seasonal river
 - Occasional river
 - Episodic river
 - Canal
 - Lake and riverbed

- Elevation classes**
- below 400 m
 - 401 - 450 m
 - 451 - 500 m
 - 501 - 550 m
 - 551 - 700 m
 - 701 - 900 m
 - 901 - 1300 m
 - 1301 - 1900 m
 - 1901 - 2500 m
 - above 2500 m

- Land cover classes**
- Forest
 - Bushland
 - Sparse vegetation
 - Arable land
 - Surface water
- Wetlands**
- Freshwater marshes and floodplains
 - Pin bracketed and saline wetland



Project information

The present map sheet is composed of field maps 1:250,000 and 1:500,000 of the region of the Southern Sudan State. The map and the geodetic data were produced by the Geomatics Engineering Centre of the University of Berne, Switzerland, with funding from the Swiss Federal Department of Foreign Affairs (FDFA). The map is being released as a technical contribution to support the humanitarian relief operations and reconstruction efforts in the Sudan. The map is based on the field maps of 1956, drawn on the spot heights and contours from map sheets. Ground truthing and control points were used to update the data.

Data sources

Most of the line and point features were produced by Swissair Information Services, Switzerland. The DEM data is based on the Swiss Military Topographic Map 1:500,000 and 1:100,000 series. Most vector data is derived from the map sheets. The map is based on the spot heights and contours from map sheets. Ground truthing and control points were used to update the data.

Data compilation

Geographic information system (GIS) data was compiled through vector-to-raster conversion. Except for the non-storing area, the DEM data was used as a reference for elevation. The map is based on the spot heights and contours from map sheets. Ground truthing and control points were used to update the data.

Map production

The map was produced using the Swissair Information Services (SIS) software. The map is based on the spot heights and contours from map sheets. Ground truthing and control points were used to update the data.

Version: Draft release 1.5
September 2005

University of Berne
Centre for Development and Environment
Geoprocessing Unit
St. Albanstrasse 3
CH - 3006 Bern, Switzerland
Internet: www.cde.unibe.ch

Centre for Development and Environment