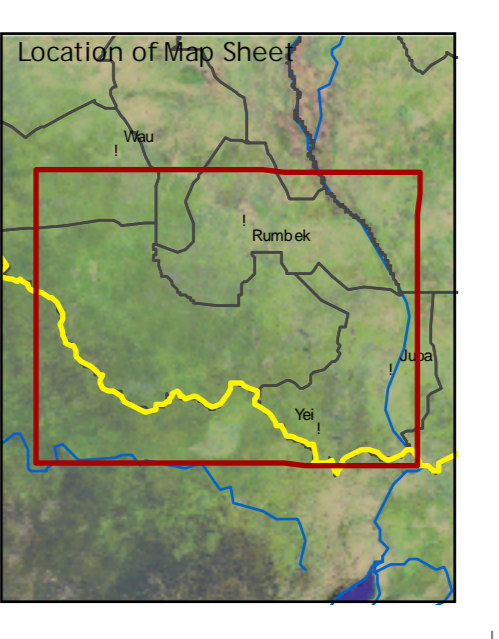
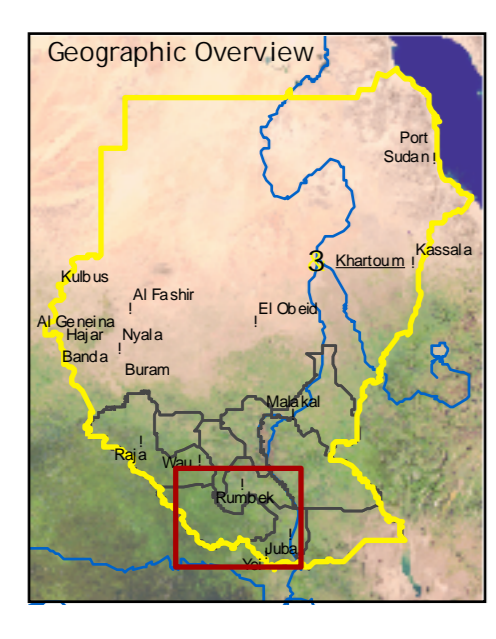


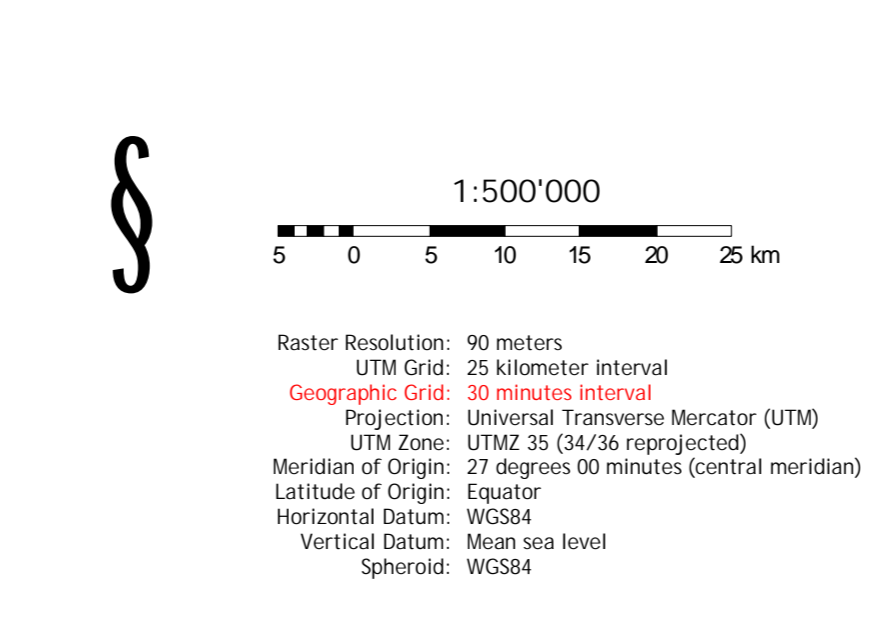
Southern Sudan State Map Series  
Western Equatoria State  
Sudan  
1 : 500'000  
Copyright ©  
Federal Department  
of Foreign Affairs  
3003 Bern, Switzerland



- Political boundaries**
  - State boundary
  - National boundary
  - North-South demarcation line 1956 (tentative)
- Topography**
  - Spot height
  - Main contour (10m interval)
  - Intermediate contour (5m interval)
  - Supplementary contour
- Settlements**
  - State capital
  - Principal town
  - Secondary town
  - Administrative town
  - Settlement (official)
  - Settlement (not verified)
  - Built-up areas
- Geographical features**
  - Hills and mountains

- Infrastructural features**
  - Air strip (CDE)
  - Main road (CDE)
  - Gravel road (CDE)
  - Dirt road (CDE)
  - Street (CDE)
  - Railway (CDE) (non-operational)
  - Bridge (E/S)
  - Main road (E/S)
  - Gravel road (E/S)
  - Street (E/S)
  - Dirt road and track (E/S)
- Hydrological features**
  - Canal (unfinished)
  - Pipeline
  - Main river
  - Seasonal river
  - Occasional river
  - Episodic river
  - Dry river
  - Canal
  - Lake and riverbed
- Elevation classes**
  - below 400 m
  - 401 - 450 m
  - 451 - 500 m
  - 501 - 550 m
  - 551 - 700 m
  - 701 - 900 m
  - 901 - 1'200 m
  - 1'201 - 1'800 m
  - 1'801 - 2'500 m
  - above 2'500 m

- Land cover classes**
  - Forest
  - Bushland
  - Sparse vegetation
  - Arable land
  - Surface water
- Wetlands**
  - Freshwater marshes and floodplains
  - Riparian and saline wetland



**Project Information**  
The present map sheet is composed of field maps (1:250,000) and is one of nine maps of the Southern Sudan State Map Series (1:500,000). The map and the production work were carried out by the Geographical Institute of the University of Berne, Switzerland, with funding from the Swiss Federal Department of Foreign Affairs. The map is being released as a technical contribution to support the national state development and reconstruction efforts in Sudan. The map is based on the 1956 demarcation line of 1956 drawn on the line of the 11th parallel north and the 11th parallel south. The 11th parallel north and south are not shown on this map.

**Data sources**  
Most of the line and point features were provided by Swissair Information Services, Heliport, SAIG (Sudan) based on the Sudan Military Topographic Map 1:200,000 and 1:100,000 scale. More recent data, mainly on road networks, were obtained from the Sudanese authorities. The map is based on the 1956 demarcation line of 1956 drawn on the line of the 11th parallel north and the 11th parallel south. The 11th parallel north and south are not shown on this map.

**Version:** Draft release 1.5  
September 2005

**University of Berne**  
Centre for Development and Environment  
Geoprocessing Unit  
Stägerstrasse 5  
CH - 3008 Bern, Switzerland  
Internet: www.cde.unibe.ch

**cde** centre for development and environment